

# **Global Green and Elemental Impact: Exploring the Value Chain of Food & Beverage Packaging**

**Susan V. Collins**  
**Container Recycling Institute**  
*December 12, 2012*



# CRI Mission Statement

CRI's mission is to make North America a global model for the collection *and* quality recycling of packaging materials. We do this by:

- Creating and maintaining a database on containers and packaging
- Studying container and packaging reuse and recycling options and legislation, including deposit systems, and their environmental and economic impacts
- Educating on recycling options for government, elected officials, for citizen groups, the print and broadcast media, publications and industry groups
- Creating national networks



# CRI History

Formed in 1991 as a 501c3 nonprofit

Reduce waste of all packaging, not just beverage containers

All material types

Programs are paid for by consumers and producers, not taxpayers and ratepayers

Emphasis on high-quality materials that are able to achieve the promise of recycling, which is replacement of virgin materials in the manufacturing process

High quantities of recyclables, high quality, lowest cost programs



# Goals & Strategies

Research “best in class” programs; educate on best practices; assist with technical data

Emphasis on high-quality materials that are able to achieve the promise of recycling, which is replacement of virgin materials in the manufacturing process

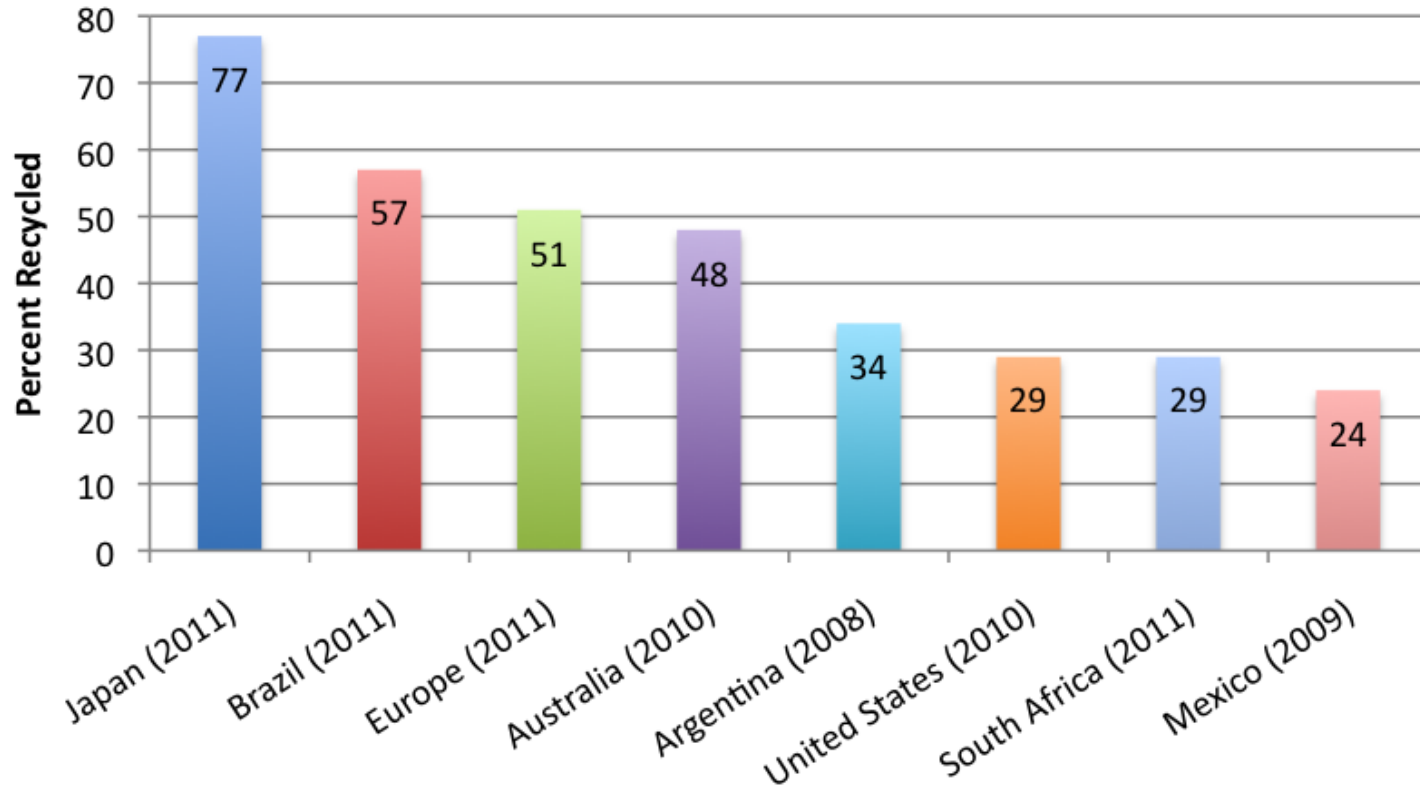
Information and Training: Technical support to industry and state-based NGO’s (very little direct lobbying)



# Research Library & Web Site Resources

- Beverage container sales and recovery, state-by-state
- Data, fact sheets and reports on deposit systems
- Web site page for over 40 deposit systems worldwide
- Environmental and economic impacts
- Expertise on California system (ecosystem)
- Modernizing deposit systems
- Alternative voice for EPR for packaging
- Presentations – 10 to 20 per year, nationwide

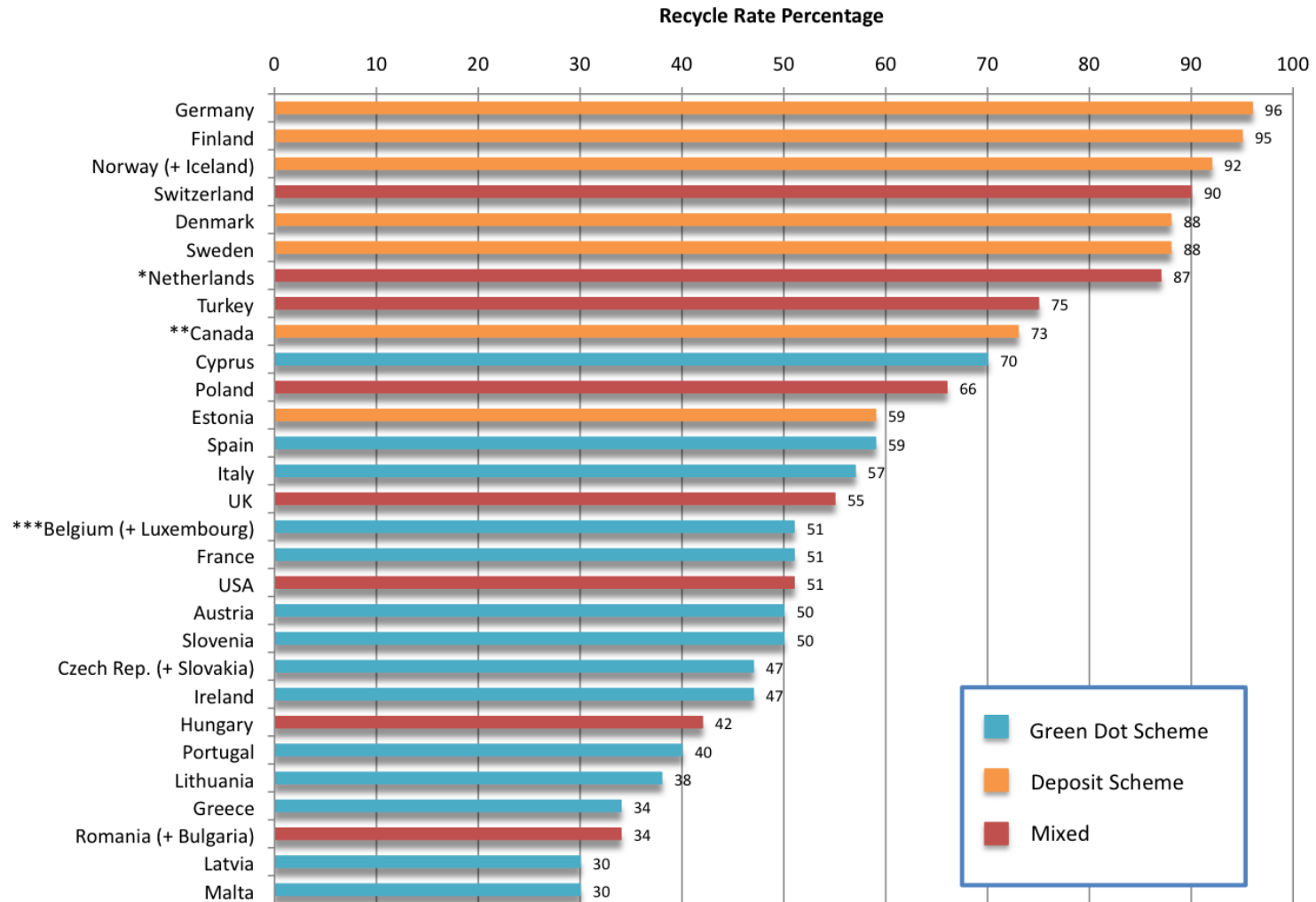
# PET Container Recycling Rates by Country



Sources: Plastic Waste Management Institute,  
Abipet, Petcore, NAPCOR, Petco, Ecoce AC, PACIA

© 2012 Container Recycling Institute

# Aluminum Used Beverage Can Recycling Rate Europe, US, and Canada 2009



Sources: European Aluminum Association, US EPA, Who Pays What

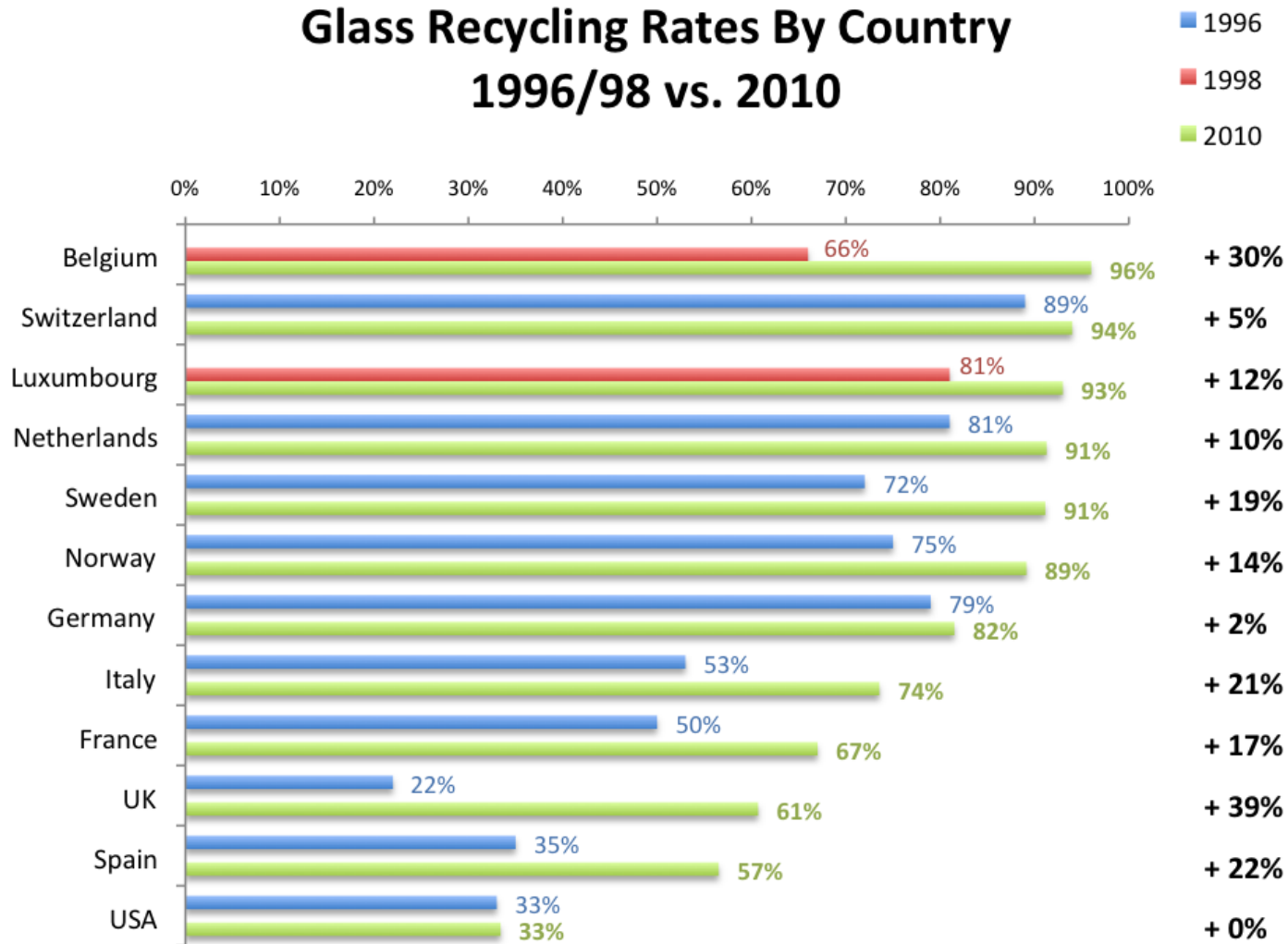
\*Recycled aluminum in the Netherlands is mainly from incinerator bottom ash.

\*\*2010 rate is used for Canada because data is missing for 2009 data set.

\*\*\*Including incinerator bottom ash, aluminum recycling rate for Belgium is 93%.

© 2012 Container Recycling Institute

# Glass Recycling Rates By Country 1996/98 vs. 2010



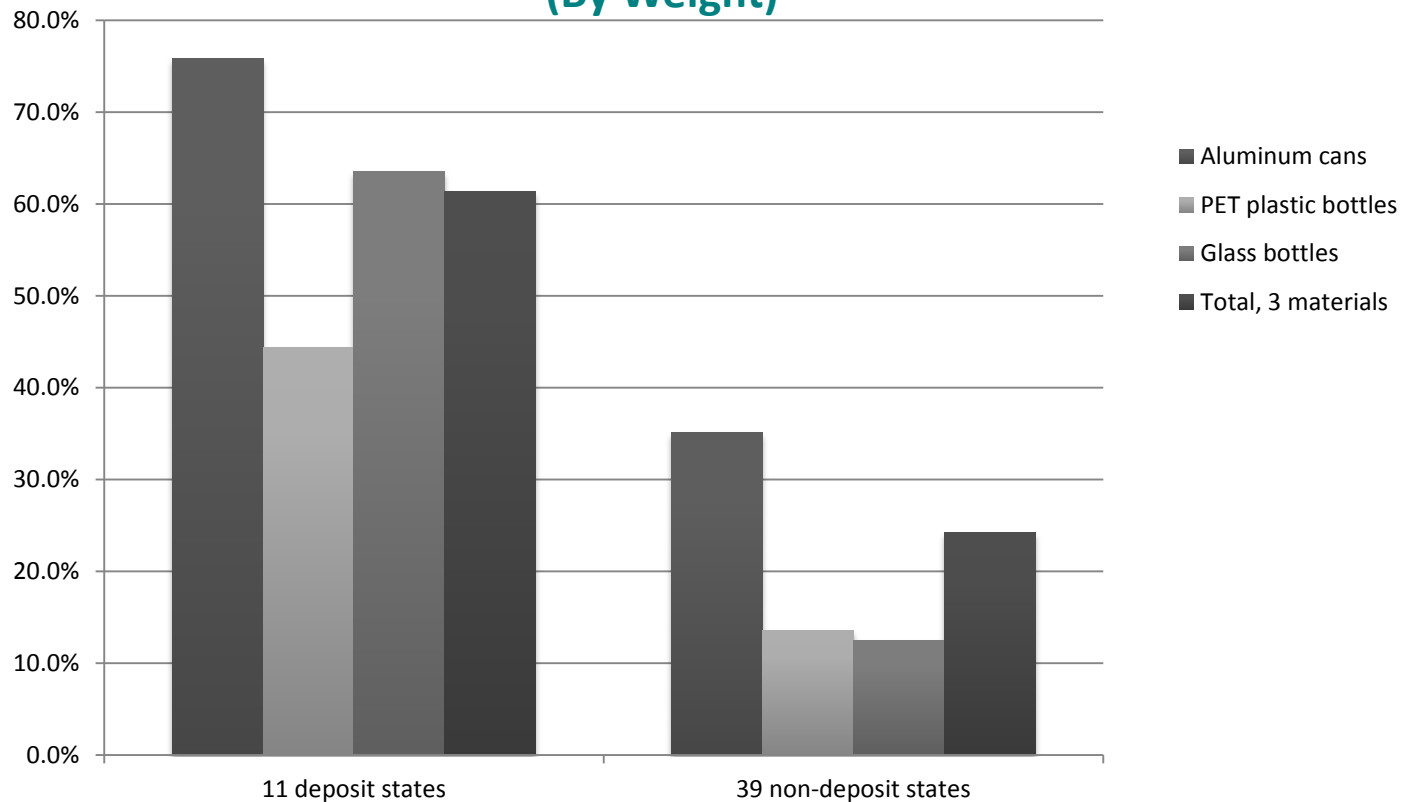
Sources: FEVE, European (for Belgium and Luxembourg 1998 rates)  
 Note: 1998 glass recycling rates were used for Belgium and Luxembourg because these data were missing from the 1996 dataset

© 2012 Container Recycling Institute



# Container Deposit Return Programs Result in Higher Beverage Container Recycling Rates

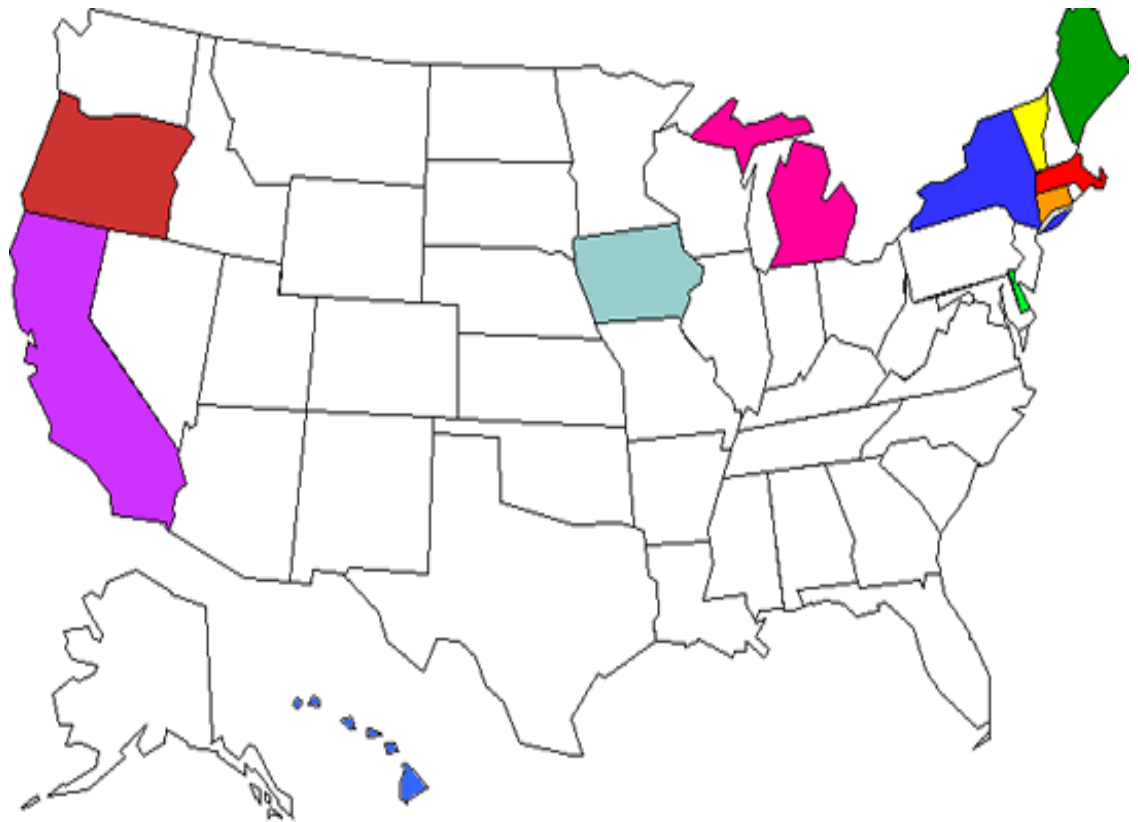
## Average Beverage Container Recycling Rates (By Weight)



Source: CRI's 2008 Beverage Market Data Analysis (using 2006 data)

# U.S. States with Container Deposit Laws

- Oregon
- Vermont
- Michigan
- Maine
- Iowa
- Connecticut
- Massachusetts
- New York
- California
- Hawaii
- Guam (new)

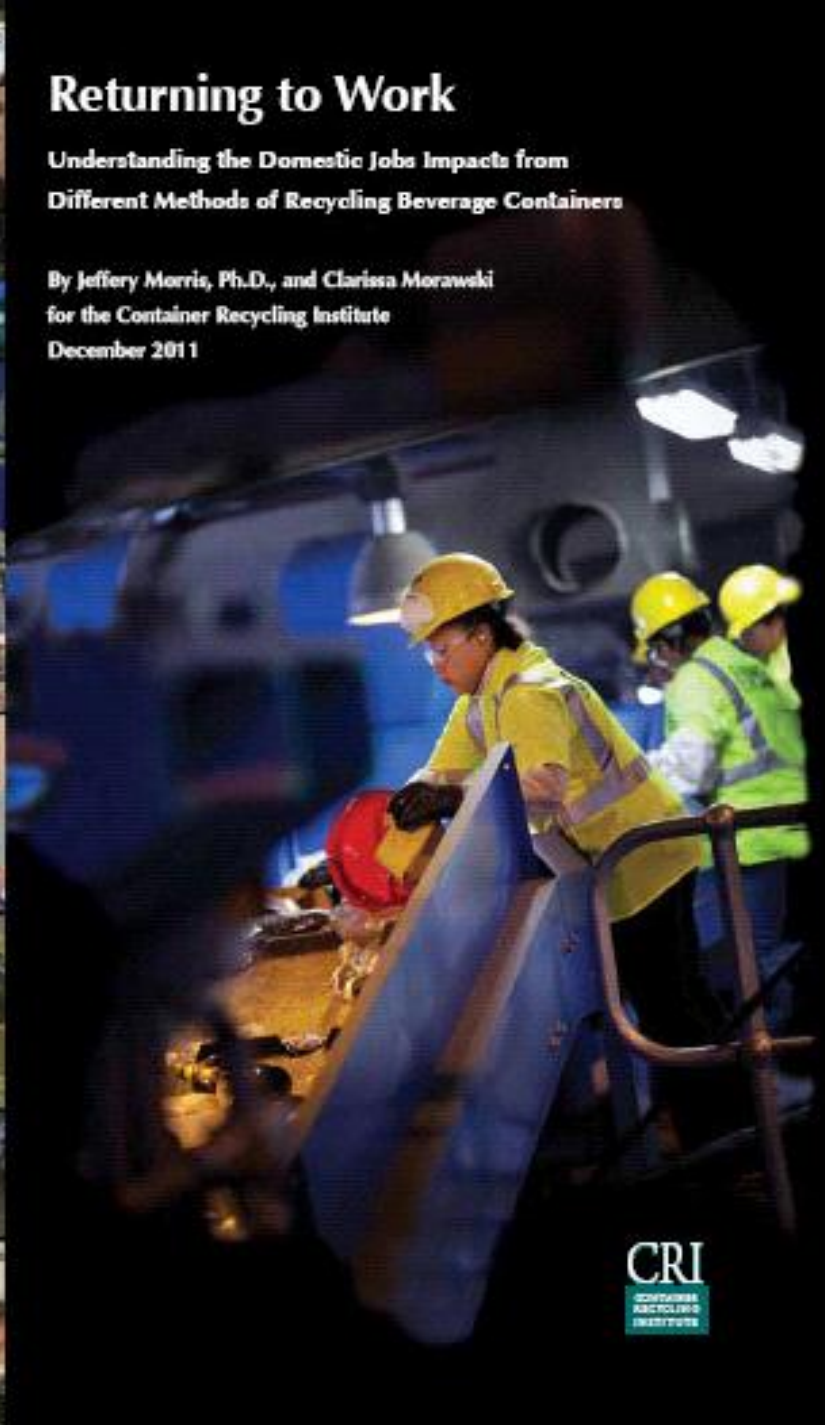




# Returning to Work

Understanding the Domestic Jobs Impacts from  
Different Methods of Recycling Beverage Containers

By Jeffery Morris, Ph.D., and Clarissa Morawski  
for the Container Recycling Institute  
December 2011



Prepared by:



Sound Resource  
Management



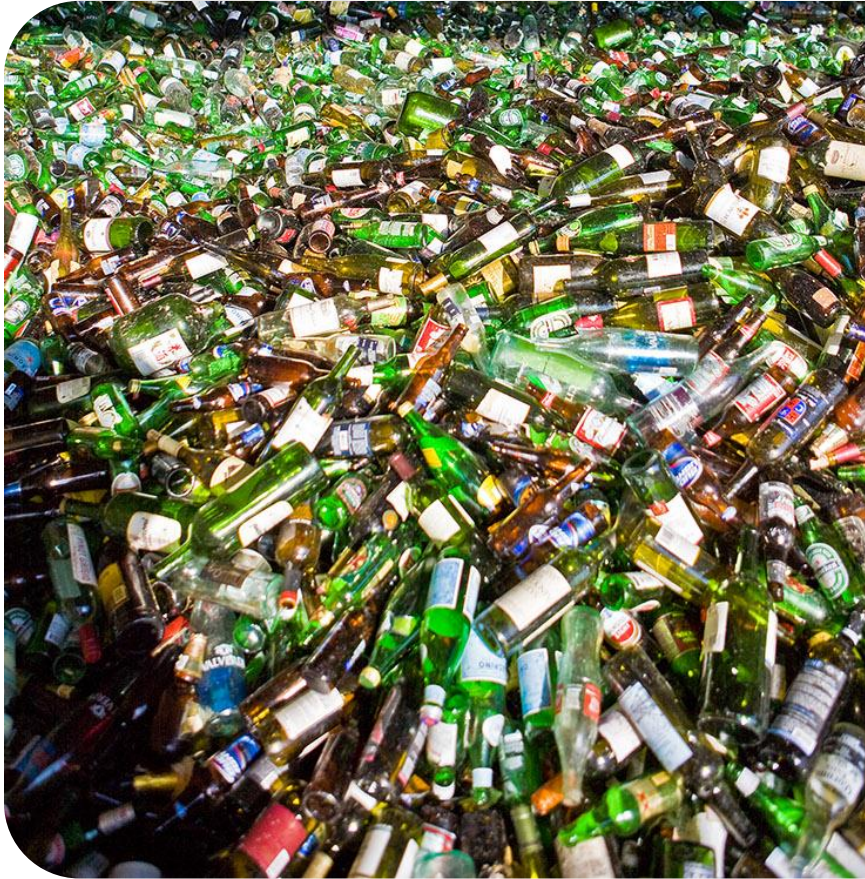
CM Consulting





**Understanding  
economic and environmental  
impacts of single-stream  
collection systems**

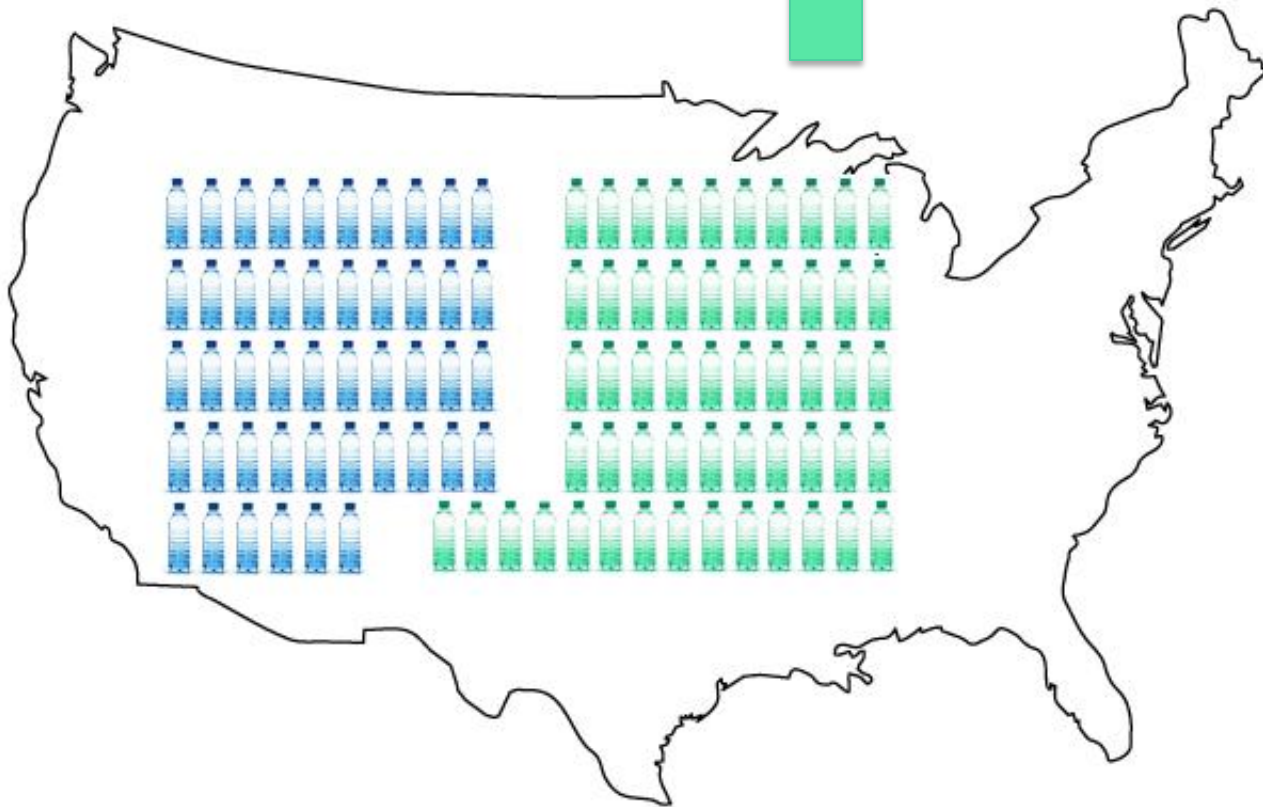
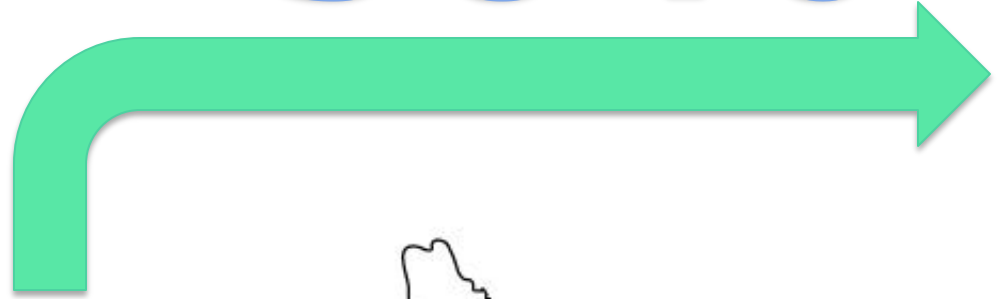
# Glass: Deposit vs. Single Stream



# Contaminants at a Paper Mill (6)



# 50%



of PET bales  
collected in  
the U.S. are  
exported



In the average single-stream collection program, if you collect 100 tons of recyclables at the curb, on average, 75 tons will actually be recycled into new products, and most of the rest will be landfilled.



# To Get More Information

- Webinars
- Weekly Headlines Newsletter (electronic)
- Quarterly Newsletter on Packaging Legislation
- Reports (downloadable)
- Magazine articles



# To Get More Information



facebook.com/  
Container.Recycling



Visit us at...

[container-recycling.org](http://container-recycling.org)

[bottlebill.org](http://bottlebill.org)

(310) 559-7451