



**SUSTAINABLE FOOD
COURT INITIATIVE
EVENT VENUE
GEORGIA DOME**



GEORGIA DOME



HOME OF THE ATLANTA FALCONS



HOST TO MANY EVENTS

Chick-fil-A Bowl

Chick-fil-A Kickoff Game

Georgia State University
Football & Graduation

SEC Football Championship

Atlanta Football Classic

NCAA Final Four 2013

Concerts

Monster Jam

Supercross

Honda Battle of the Bands



SUSTAINABLE FOOD COURT INITIATIVE: GOALS

S F C I

To produce industry standards for unique venues that strive for zero waste

G E O R G I A D O M E

Create successful partnerships

Take leadership in industry

Influence market

Internal focus on sustainability

SUSTAINABLE FOOD COURT INITIATIVE: EVENT VENUE PILOT

Mission

To bring zero waste initiatives to food courts and develop industry sustainable best practices for back-of-the-house and front-of-the-house operations

Focus

Organics collection
Packaging
Type of food served and assembly procedures
Disposal systems for food and packaging
Condiment & beverage stations
3rd party items brought to food court

SUSTAINABLE FOOD COURT INITIATIVE: INVOLVEMENT

S F C I

Trade Associates/Non-Profits/Government

- Elemental Impact
- Central Atlanta Progress

Industry Suppliers

- Asean/Stalkmarket
- NatureWorks
- Solo Cups
- BASF – The Chemical Company
- Heritage Interactive

G E O R G I A D O M E

Levy Restaurants

Facility Operations

Sustainability Department

NFPs & 3rd Parties

GEORGIA DOME BEST PRACTICES

- Reusable china, flatware, glasses & napkins in suites
- About 80% of disposables are compostable or recyclable
- Kitchen composting and TrimTrax program
- Reuse and recycle fryer oil
- Measuring waste streams



GEORGIA DOME BEST PRACTICES



SUSTAINABLE FOOD COURT INITIATIVE: EVENT VENUE PILOT

www.gwcc.com www.gadome.com

Plastic Bottles & Containers



Aluminum & Steel Cans



Cardboard & Paperboard



Clean Paper



Newspaper



Glass



NO Food. NO Liquids.

Recycling

www.gwcc.com www.gadome.com

Non-Compostable Cups & Straws



Plastic Bags



Chip & Snack Bags



Condiment Packages



Styrofoam



If Unsure, Discard Materials in this Container.

Landfill

www.gwcc.com www.gadome.com

Food & Liquid



Tea Bags & Coffee Grinds



Napkins & Paper Products



Compostable Cups/Containers Ecotainer/PLA



Plant Waste



NO Metal. NO Glass. NO Plastic.

Compost

SUSTAINABLE FOOD COURT INITIATIVE: COMPOSTABILITY

Evaluation of
compostable
packaging

Post-game pick of
compostables

Evaluation of
material
decomposition



SUSTAINABLE FOOD COURT INITIATIVE: COMPOSTABILITY



SUSTAINABLE FOOD COURT INITIATIVE: COMPOSTABILITY



SUSTAINABLE FOOD COURT INITIATIVE: RECYCLING

BUILDING
RELATIONSHIPS



IDENTIFYING BEST
PRACTICES

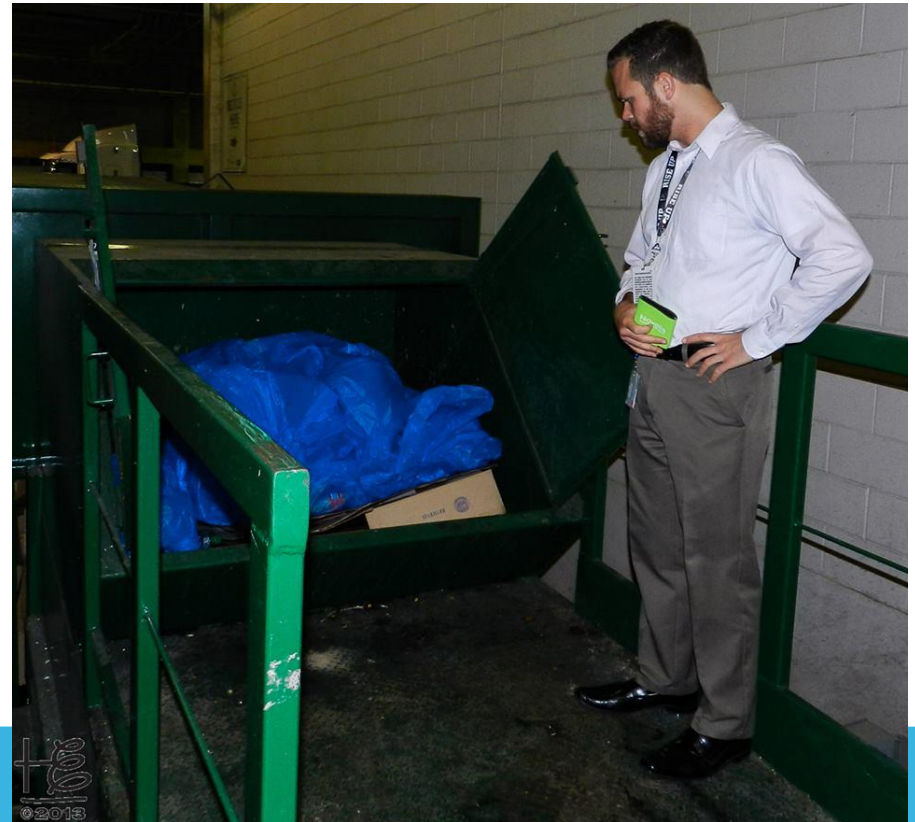


SUSTAINABLE FOOD COURT INITIATIVE: RECYCLING

DEVELOPING
PARTNERSHIPS



IDENTIFYING BEST
PRACTICES



Tim Trefzer

Sustainability Coordinator

Georgia World Congress Center Authority

ttrefzer@gwcc.com

<http://elementalimpact.org/SFCI>

