

WHO ARE WE? - ZERO WASTE IN PRACTICE
PRESENTED TO THE
ANNUAL EI PARTNER MEETING 2014
NOVEMBER 20, 2014

Huntersville **CHARLOTTE** **Pineville**
Matthews
CORNELIUS
Unincorporated
Mecklenburg County
Mint Hill
Davidson

Photo by Brad Kuntz courtesy of the Charlotte Chamber



Who are we?

Mecklenburg Stats

**Population: 722,627 City of Charlotte,
966,160 Mecklenburg County, 1,857,624 MSA**

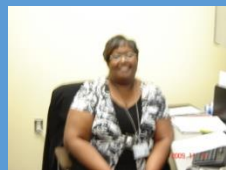
Seven Municipalities

Who Are We?

Solid Waste – *Management Team*

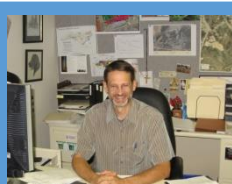


Jeff Smithberger
Director

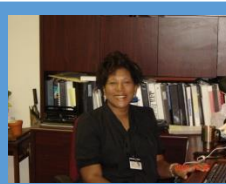


Lynn Knox
Admin Coord

Fee Booth Cashiers
Fiscal Control



Joe Hack
Engineering

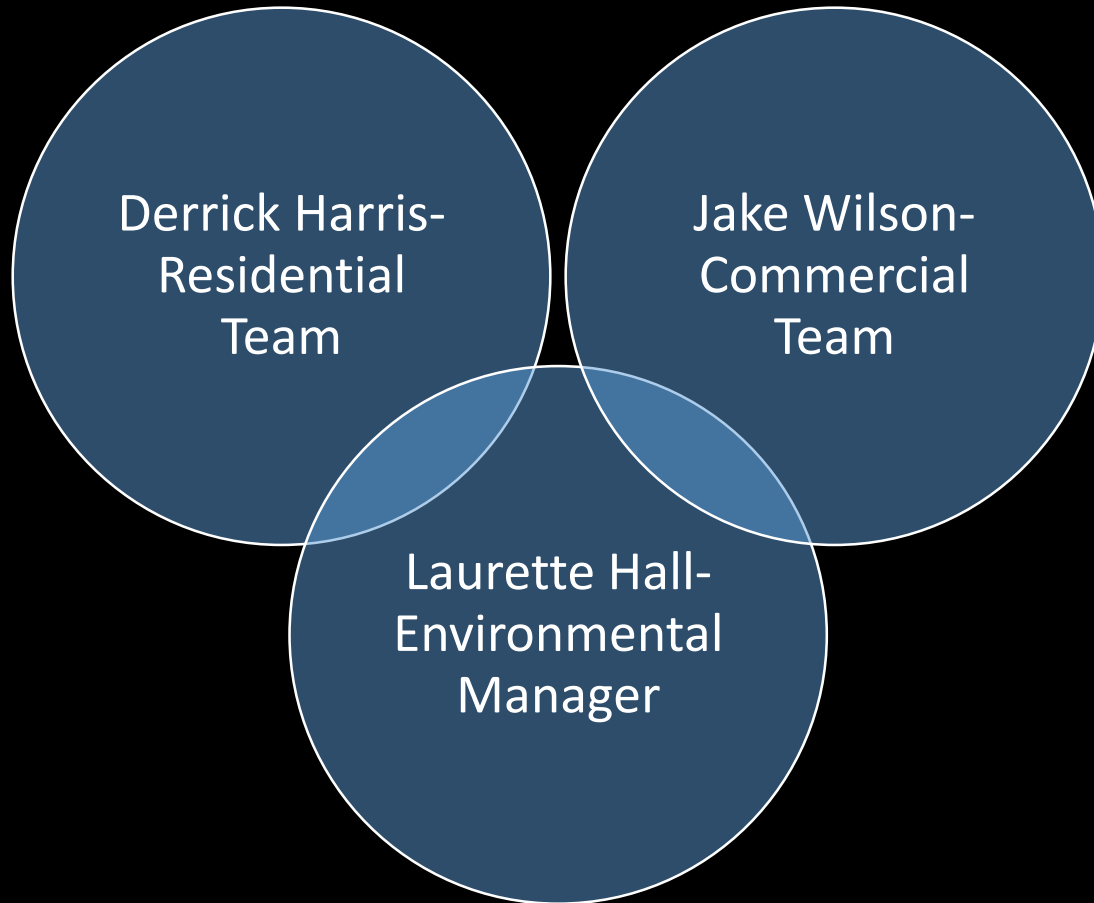


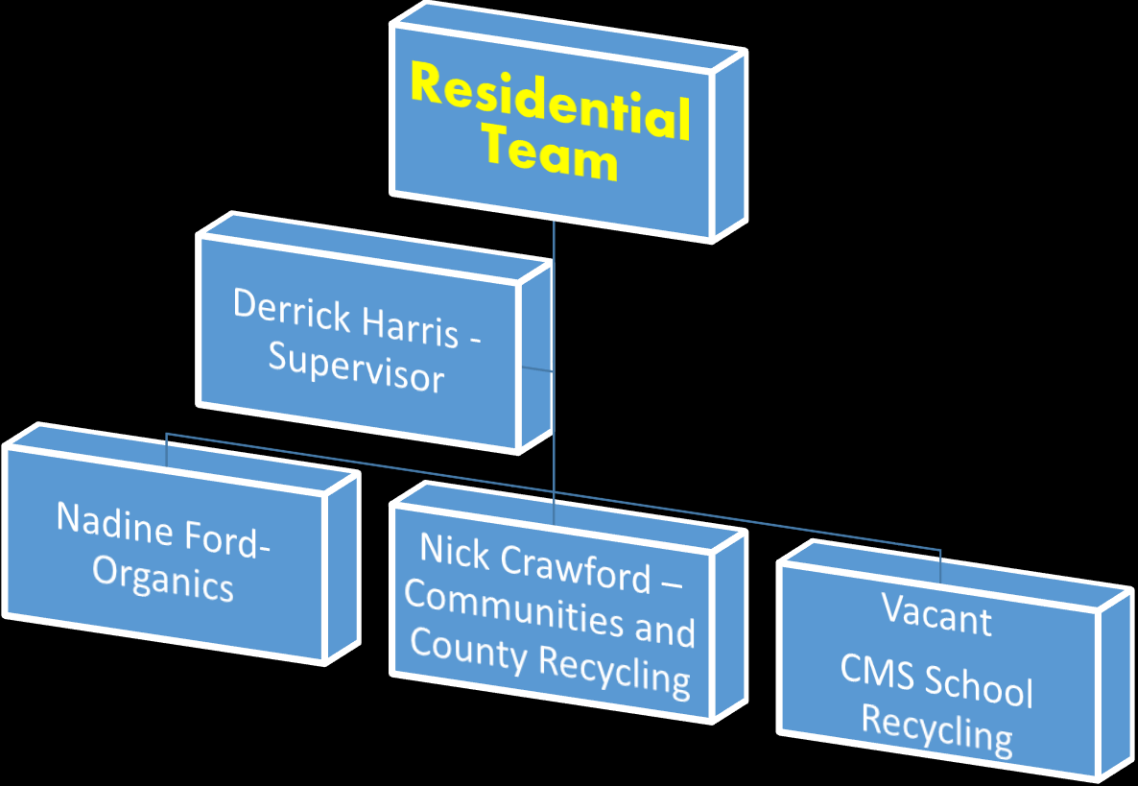
Laurette Hall
Waste Reduction



Steve Hoffman
Operations

Waste Reduction – *Management Team*





Jake Wilson, **Commercial**
Team Supervisor

Aaron Caudle-
Ordinance Enforcement

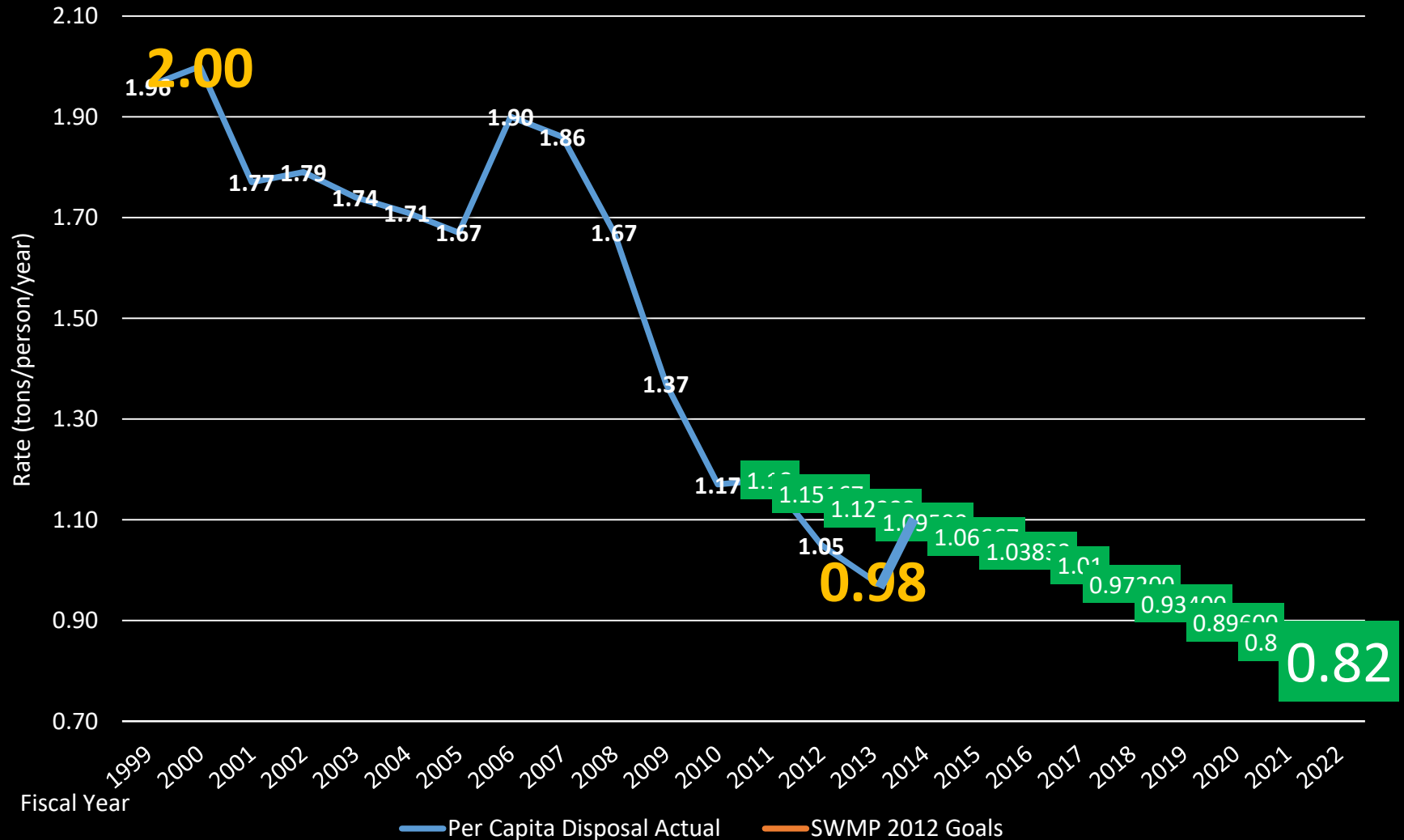
Ryan Johnson-Business
Recycling

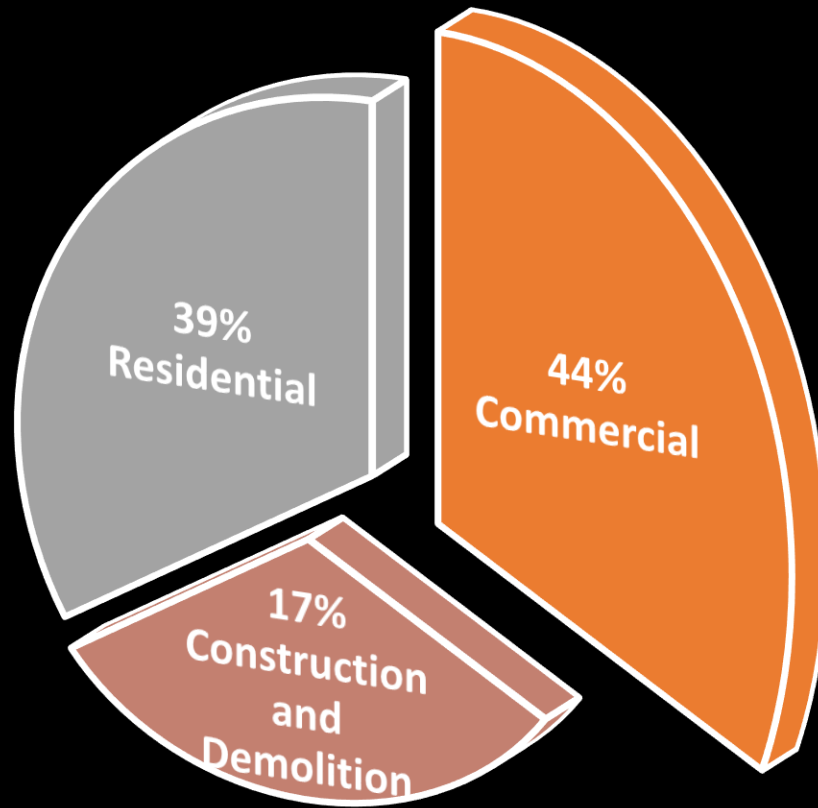
Michael Talbert-C&D
Recycling

SOLID WASTE AT A GLANCE

- Residential Tipping Fees @\$29/Ton
- Commercial Tipping Fees @ \$50-80/Ton
- Construction & Demolition(C&D) @ \$39/Ton
- Landfill Capacity 25+ Years
- Residential Curbside programs are voluntary and collection provided by seven municipalities
- C&D Diversion is voluntary
- Business Recycling mandatory for 16 cubic yards or more and collection provided by private sector
- Business Recycling is not reported to Mecklenburg County
- State of North Carolina counts per capita waste diversion

Reducing Waste to Landfills in Mecklenburg County





Mecklenburg County Waste Composition

SCALING UP CHARLOTTE COMPOSTING



Businesses

- The six largest food waste generating sectors are food manufacturers, food stores, restaurants, hotels/lodging, medical/health services and education.
- Businesses generate approximately 143,000 tons annually
- 36,000 tons already composted, 30,000 tons of unused capacity exist

**FOOD WASTE STUDY BY
KESSLER CONSULTANTS**

SCALING UP CHARLOTTE COMPOSTING



Business and Residential Findings

- Existing capacity to perform pilot collection programs
- Not enough capacity for the County to roll-out a countywide program

Residents

- Residents generate 39,000 to 60,000 tons annually
- A residential waste characterization study is needed to obtain more accurate quantities
- The Town of Huntersville, that offers a 96-gallon roll cart for weekly collection of yard debris, is best suited to conduct a food scraps recovery pilot

**FOOD WASTE STUDY BY
KESSLER CONSULTANTS**

ORGANICS



One pound per week per child in fifteen CMS elementary schools

THANK YOU!

Laurette Hall

704-336-8393

Laurette.Hall@MecklenburgCountyNC.gov

www.wipeoutwaste.com