



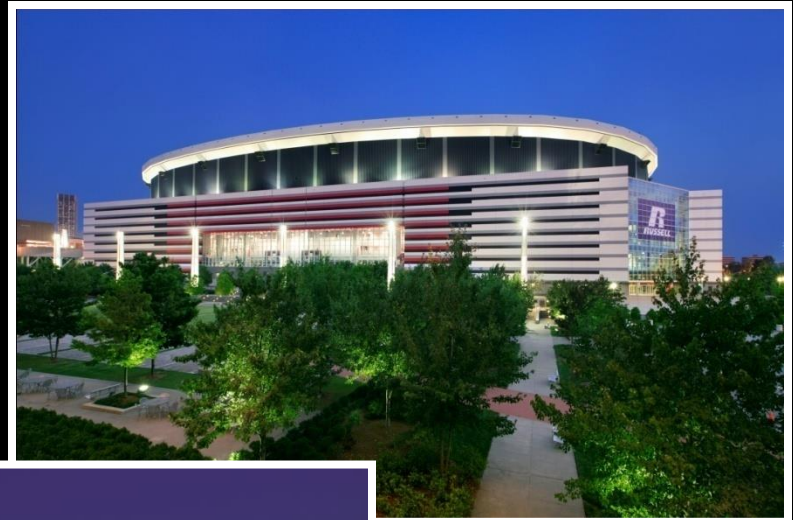
# U.S. Zero Waste Business Council Conference

Source-Separated Materials

11/19/2018



# Georgia World Congress Center Authority



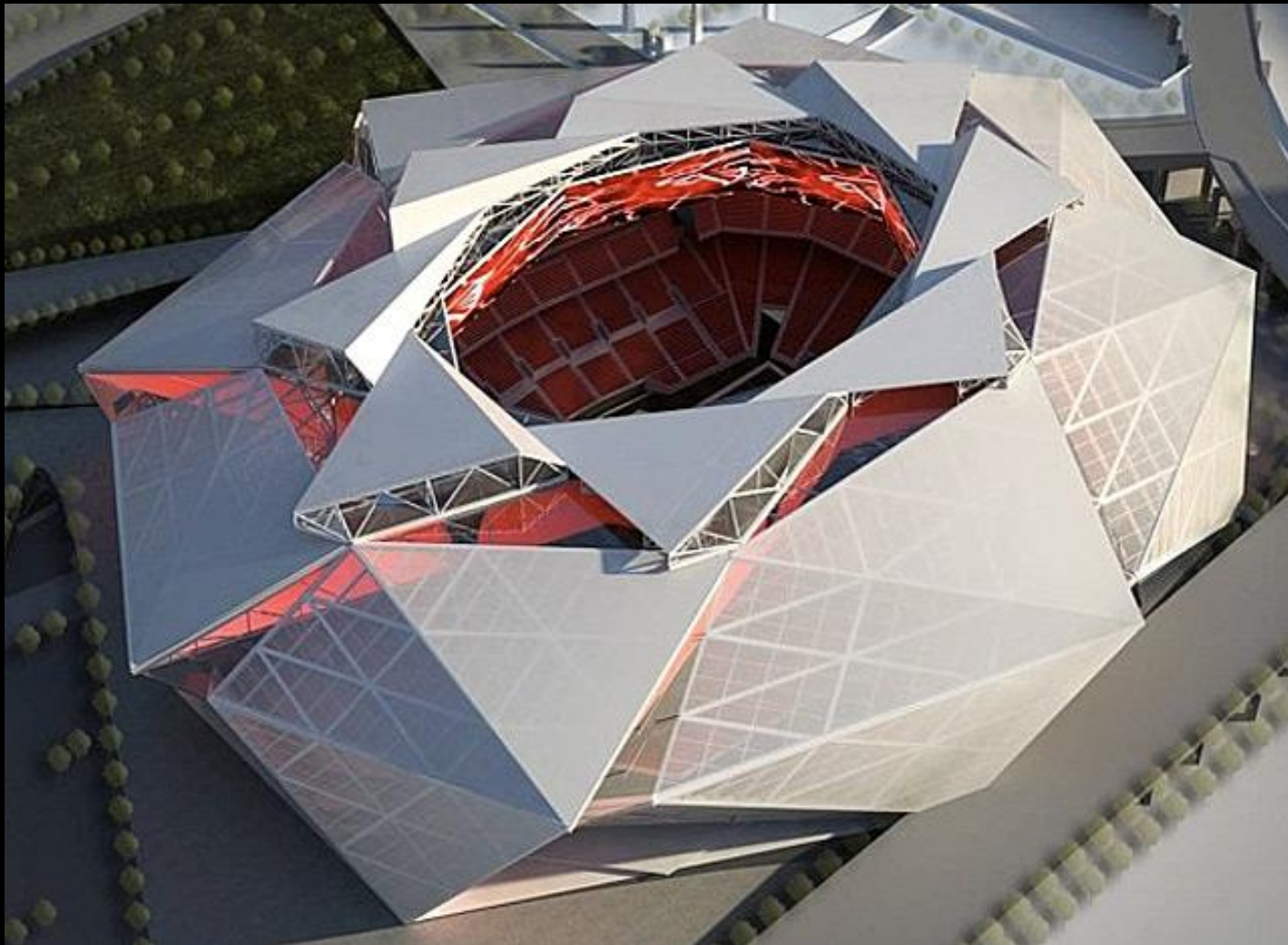
# College Football Hall of Fame





# New Falcons Stadium

Located on the GWCCA Campus



# Savannah International Trade & Convention Center









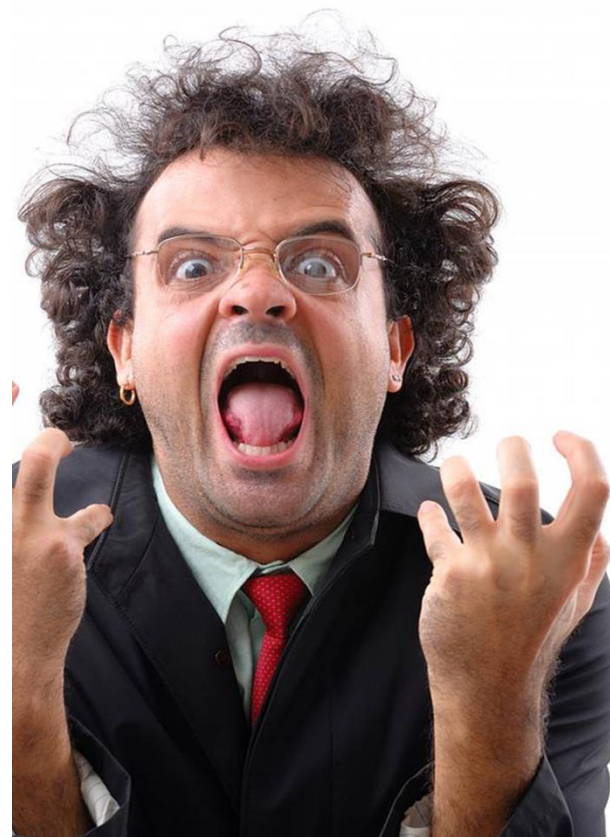






# Challenges

- Time
- Labor
- Space
- Education







# Opportunities

- Community Leadership
- Environmental Benefits
- Reduced Disposal Costs/Revenue Add



# Reframe Waste as a Resource

- Waste Diversion Streams
  - Single-Stream Recycling
  - Food Donations
  - Cardboard & Plastic Film
  - Organics/Food Waste
  - Grease/Fryer Oil
  - Wood Pallets
  - Material Donations
  - Copper Wire & Metals
    - \$17,000+ in FY14
  - Furniture/Equipment
    - \$24,000+ in FY14





# Source-Separation Pilot

- Evaluate Processes
- Develop Phased Approach
  - Identify Space, Time, and Labor
- Gain Buy-in
- Educate and Implement
- Build and Refine

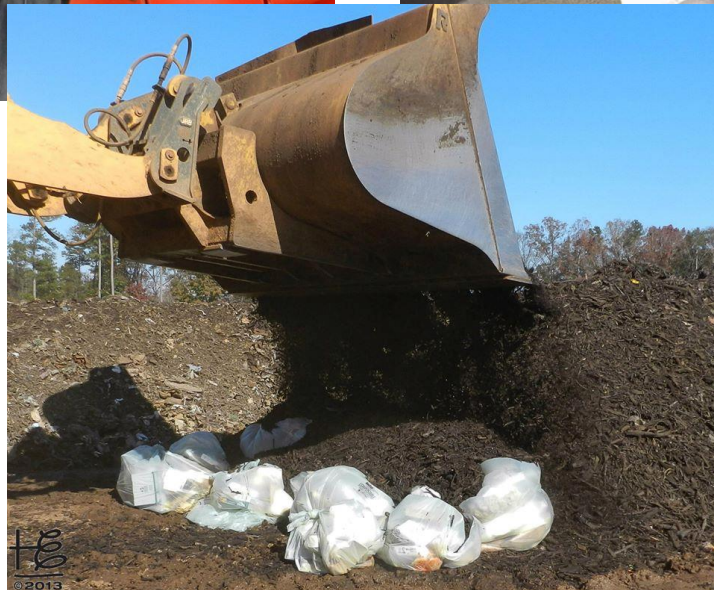


# Source-Separation Pilot





# Source-Separation Pilot





# Educating Fans, Employees, & Contractors





# Educating Fans, Employees, & Contractors

www.gwcc.com    www.gadome.com

**Plastic Bottles & Containers**




**Aluminum & Steel Cans**



**Cardboard & Paperboard**



**Clean Paper**



**Newspaper**

**Glass**



**NO Food. NO Liquids.**

**Recycling**

www.gwcc.com    www.gadome.com

**Non-Compostable Cups & Straws**



**Plastic Bags**




**Chip & Snack Bags**



**Condiment Packages**



**Styrofoam**



**If Unsure, Discard Materials in this Container.**

**Landfill**

www.gwcc.com    www.gadome.com

**Food & Liquid**




**Napkins & Paper Products**



**Tea Bags & Coffee Grinds**



**Compostable Cups/Containers Ecotainer/PLA**



**Plant Waste**



**NO Metal. NO Glass. NO Plastic.**

**Compost**



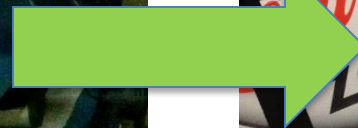
# Source-Separation Pilot Restaurant: Southern Roots





# Event-Specific Challenges

**THE ROAD  
TO  
ATLANTA IS  
PAVED GREEN**





# Next Steps

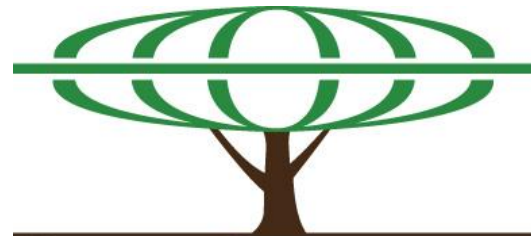
- Build Upon Successes
- Refine Process
- Increase Collection Ability
- Communicate Program With Others





GEORGIA  
WORLD  
CONGRESS  
CENTER  
AUTHORITY

**Tim Trefzer, LEED AP  
Sustainability Manager  
ttrefzer@gwcc.com**



SeeGreen