



COALITION *for* RESOURCE RECOVERY



Food & Beverage Packaging Value Chain Meeting

December 11, 2014



Eliminate waste. Harvest assets.

Make money.

How We Work

Pilots



Forums



Outreach



Research



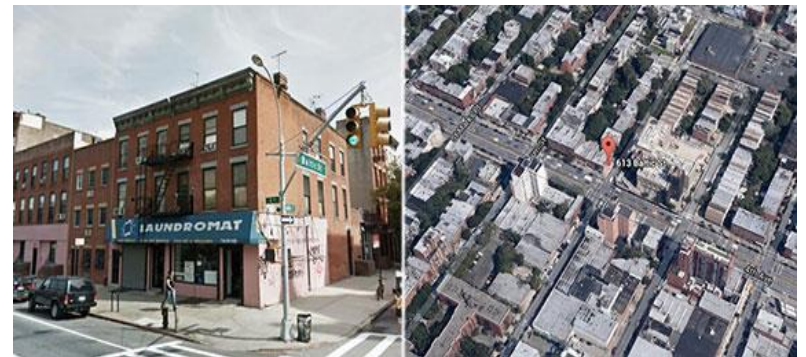
Pilot Programs

Piloting Recyclable and Compostable Alternatives



Facilitating “Pioneer” Participation

Food Scrap Recovery in Residential Multifamily Buildings



Building End Markets

Food Waste and Foodservice Packaging



Compost Opportunity Series



Raising Awareness of Transformative Policies

Commercial Food Waste Ban / “Save as You Throw”



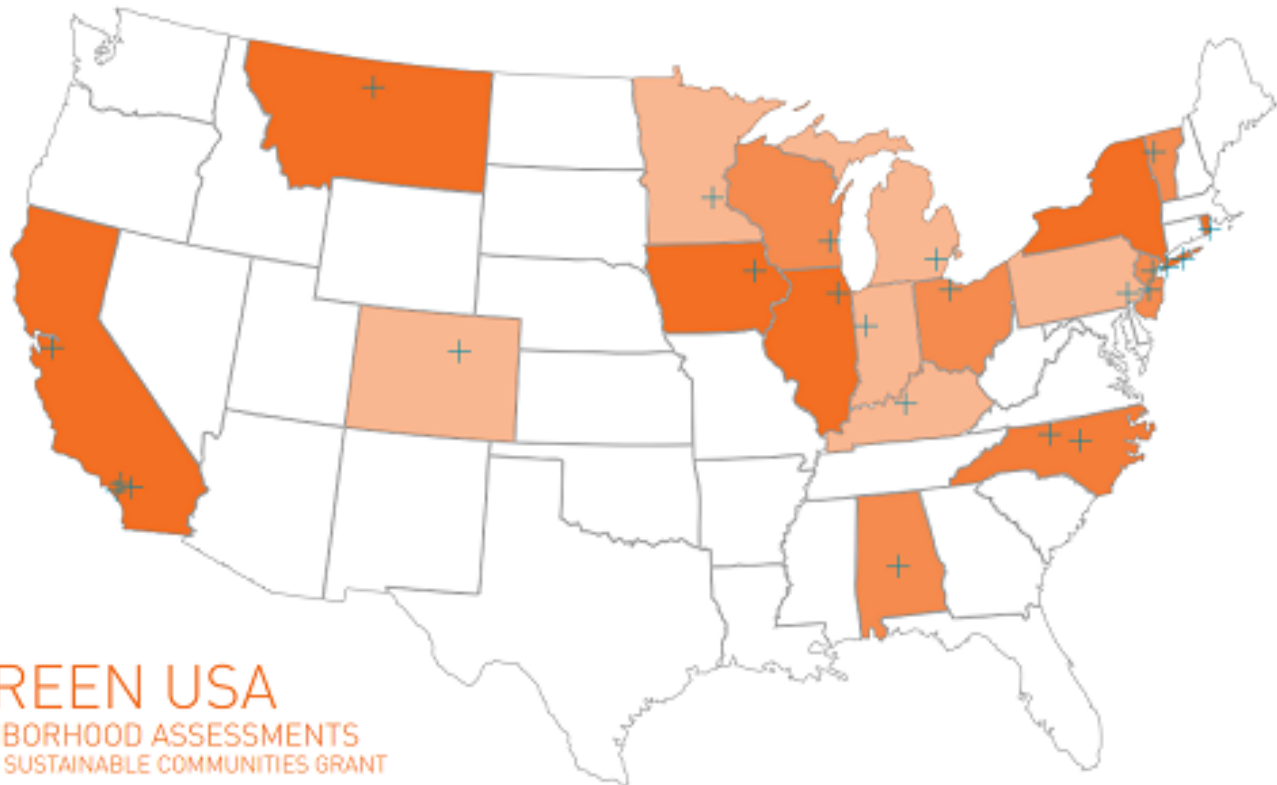
Sustainable Cities

2014
2013
2012

LOS ANGELES, CA
LONG BEACH, CA
SANTA MONICA, CA
DUBUQUE, IA
OAK FOREST, IL
CHIPPEWA-CREE, MT
LONG BEACH, NY
WESTERLY, RI

MONTGOMERY, AL
CARY, NC
CAMDEN, NJ
HOBOKEN, NJ
STATEN ISLAND, NY
TOLEDO, OH
BURLINGTON, VT
MILWAUKEE, WI

OAKLAND, CA
LAKEWOOD, CO
LAFAYETTE, IN
LOUISVILLE, KY
DEARBORN, MI
EDEN PRAIRIE, MN
GREENSBORO, NC
PHILADELPHIA, PA



GLOBAL GREEN USA
SUSTAINABLE NEIGHBORHOOD ASSESSMENTS
EPA BUILDING BLOCKS FOR SUSTAINABLE COMMUNITIES GRANT



COALITION *for* RESOURCE RECOVERY

Thank You

Matt de la Houssaye

mdelahoussaye@globalgreen.org

thecorr.org / globalgreen.org



COALITION *for* RESOURCE RECOVERY