

Regenerative Working Group (RWG)

Chair: Holly D. Elmore,
Elemental Impact (Ei) Founder and CEO

Global thought leaders in supporting complete and equitable communities



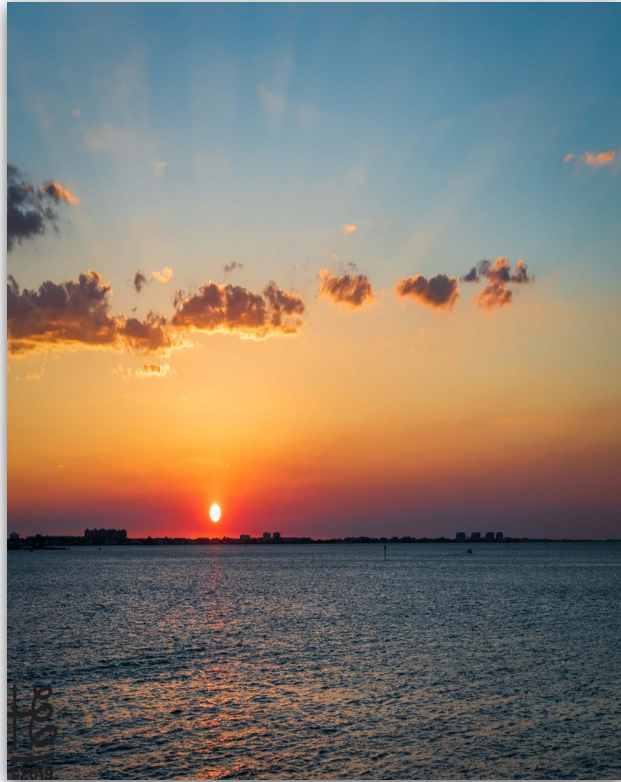


Ei Mission:

To work with industry leaders to create best regenerative operating practices where the entire value-chain benefits, including corporate bottom lines, communities, and the environment. Through education and collaboration, establish best practices as standard practices.

RWG Vision:

To engage the Ei network and explore challenges related to infrastructure, environmental resources, and social equity using a holistic approach, where the community, environment, and local economies benefit from commentary, discussions, and proposed projects.



The Executive Team



Holly Elmore,
Chair



Bernadette Austin,
Focus Area
Chair



Brad Bass,
Advisor



Ron Thomas,
Advisor

Ei

Regenerative Working Group

Elemental
IMPACT

3 Focus
Areas

Infrastructure



Environmental
Resources

Social Equity



Ei

Elemental
IMPACT

Regenerative Working Group

Infrastructure

(Man-made)

Vision:

To explore the development, improvement, and preservation of facilities that support an environmentally and financially sustainable built environment.

Scope:

Facilities such as municipal water and sewer systems, public utilities, parks, educational districts, etc.

Challenge:

Addressing resilient, environmentally and economically sustainable land-use practices.

Infrastructure
Topics



Photo courtesy of the City of Toronto

Waste &
Recycling
Management
Systems



Photo courtesy of Thomas Nutrient Solutions

Biosolid
Management
Systems

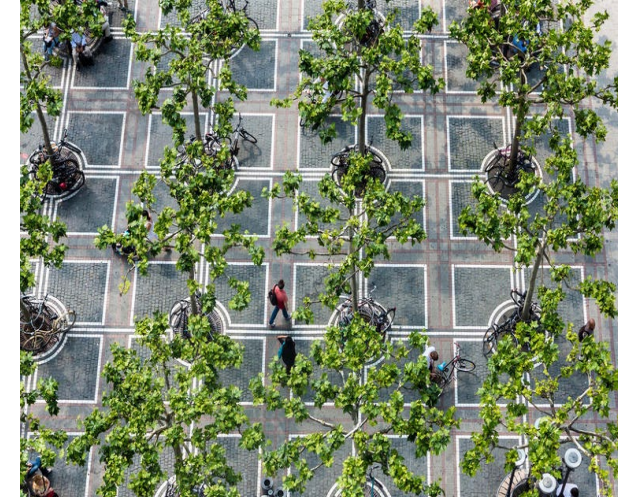


Photo courtesy of the Natural
Resources Defence Council

Green
Infrastructure

Environmental Resources

(Nature-made)

Vision:

To explore the interaction of humans with environmental resources in urban and rural areas through the lens of land use.

Scope:

The impact of existing and proposed projects and infrastructure within communities.

Challenge:

Balancing growing population and economic demands with limited natural resources and open space.

Ei

Elemental
IMPACT

Regenerative Working Group

Environmental Resource Topics



Photo courtesy of WilderCulture.com

Soil
Health &
Restoration



Photo courtesy of Devron Ltd.

Erosion
Control



Photo courtesy of the USDA Forest Service

Urban
Carbon
Sinks

Ei

Elemental
IMPACT

Regenerative Working Group

Social Equity

(Human Integration)

Vision:

To support the development of complete communities with equitable access to opportunity and amenities.

Scope:

Ways to promote equitable access while balancing land uses focused on people with natural and working land uses.

Challenge:

Addressing the barriers in sustainable and equitable land economics.

Ei

Elemental
IMPACT

Regenerative Working Group

Social Equity Topics



Image courtesy of Urban Consulate

Racial Equity



Image courtesy of the National
Apartment Association

Affordable
Housing

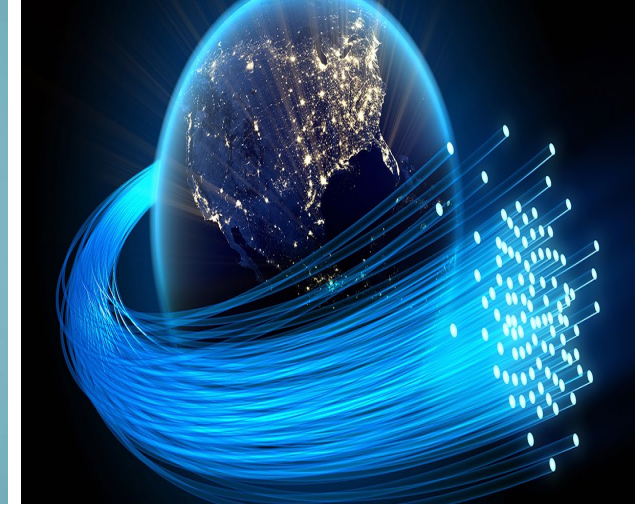


Image courtesy of Primex

Broadband
Network
Communication

Provide **Project Explorations** by RWG members

WHAT WILL WE BE DOING?



Image courtesy of flaticon.com

↓
Publish in blog articles

↓
Disseminate to the Ei network through webinars

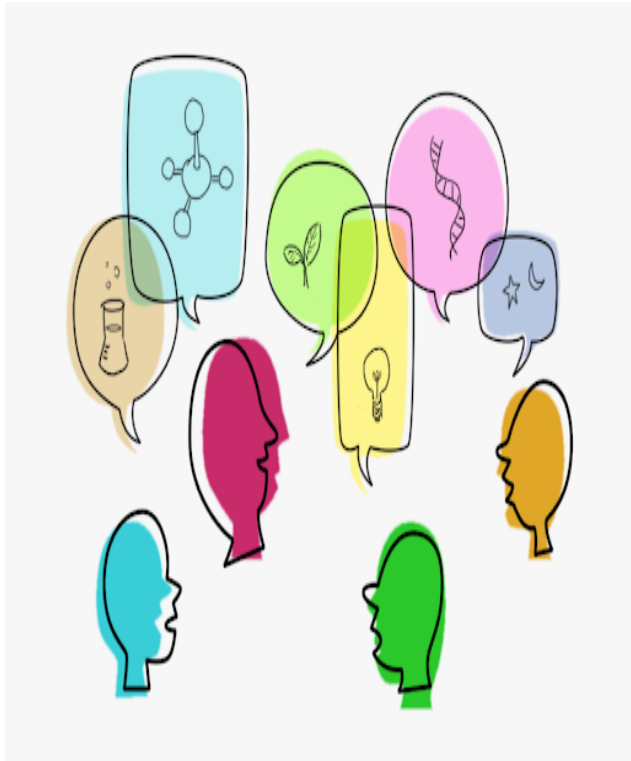
↓
Expand upon through research projects

The RWG is committed to...

ACTION



Image courtesy of dreamstime.com



Communication:

- Quarterly RWG Virtual Calls
- Quarterly RWG Newsletter

Image courtesy of clipart-library.com

Ei

Regenerative Working Group

Elemental
IMPACT



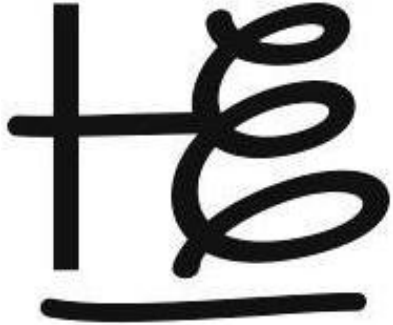
Questions?

RWG: Global thought leaders in supporting complete and equitable communities

Ei

Elemental
IMPACT

Regenerative Working Group



All photos courtesy of
Holly Elmore Images
(unless otherwise specified.)

For more information, please contact:

Holly D. Elmore
Chair, RWG

Founder & CEO, Ei
404-261-4690

holly@elementalimpact.org