

COMMUNITY PLAYBOOK FOR CLEAN WATERWAYS

An Initiative of the Gulf Coast Community Foundation

Jon Thaxton, Gulf Coast Community Foundation

Jennifer Shafer, Shafer Consulting





OUR WAY OF LIFE

DECADES OF INVESTMENT



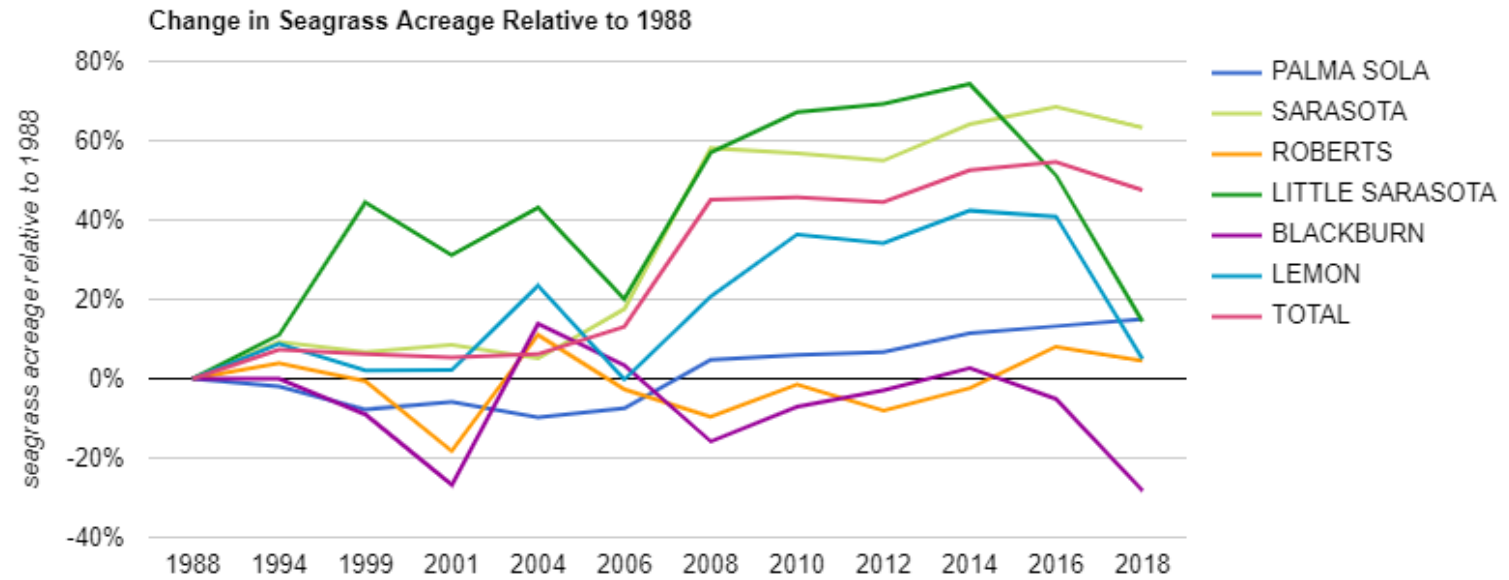
Why worry about excess nutrients?

- Excess nutrients change the balance of natural flora and fauna and cause algal blooms
- Algal blooms cause economic, social and environmental stress



Nitrogen is increasing in Sarasota's Bays

Seagrass acreage is down in our southern bays



Data Source: Southwest Florida Water Management District

A close-up photograph of a dolphin leaping from the water. The dolphin is captured mid-air, with its body arched and its tail fluke visible. Water droplets are frozen in the air around the dolphin, creating a dynamic and energetic scene. The background is a soft, out-of-focus blue-grey water surface.

PURPOSE

- Focus, prioritize, and coordinate community activity and philanthropy
- Engage community leaders across government, non-profit organizations, businesses, and homeowner associations

GOALS

Goal 1: **Reduce**
anthropogenic-based nutrient
loading in natural systems

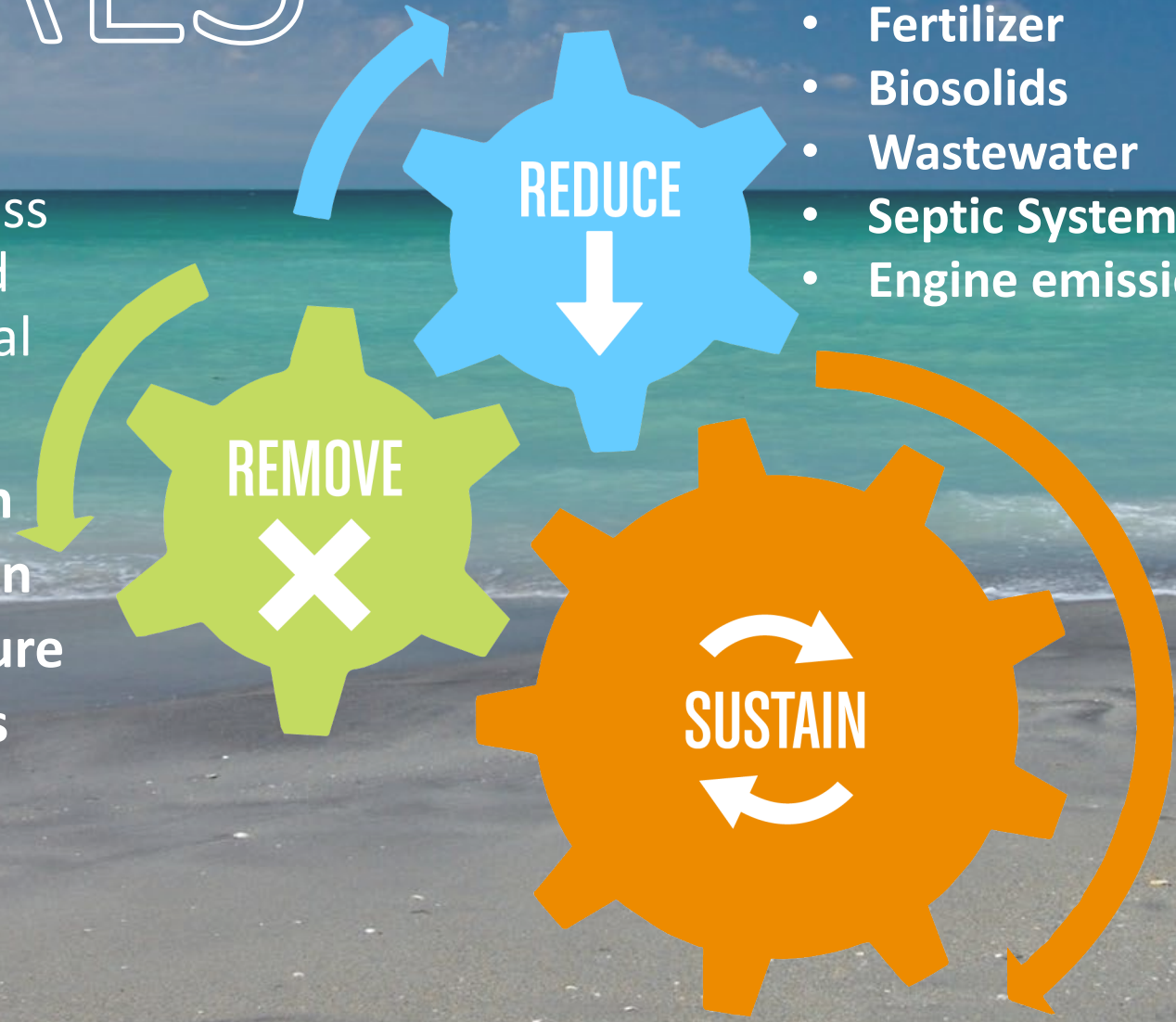
- **Fertilizer**
- **Biosolids**
- **Wastewater**
- **Septic Systems**
- **Engine emissions**

Goal 2: **Remove** excess
anthropogenic-based
nutrients from natural
systems

- **Land conservation**
- **Species restoration**
- **Green infrastructure**
- **Stormwater BMPs**

Goal 3: Build capacity and
resilience of ecosystems
and human systems to
sustain G1-2.

- **Education**
- **Incentives**
- **Partnerships**
- **Better data**
- **Public policy**



Steering Committee

Chair Jon Thaxton – Gulf Coast Community Foundation

Contact: jthaxton@gulfcoastcf.org

Mark Alderson – Sarasota Bay Estuary Program

Lee Hayes Byron, MA – UF/IFAS Sarasota County Extension

Stevie Freeman-Montes, MA – City of Sarasota

Sandy Gilbert – Solutions to Avoid Red Tide

Jennifer Hecker – Coastal & Heartland National Estuary Partnership

Christine Johnson, MBA – Conservation Foundation of the Gulf Coast

Alan Jones – Jones Potato Farm and Argus Foundation

John Ryan – Sarasota County Stormwater Environmental Utility

Darcy Young, MA – Sarasota Bay Estuary Program

Facilitation, Research, Writing

Jennifer Shafer, PhD - Shafer Consulting

Contact: jennifer@shaferconsulting.com

David Shafer, PhD - Shafer Consulting

Stephen Suau, PE - Progressive Water Resources